

L3230 DIC



- L3230DIC Differential Interference Contrast Metallurgical microscopes are suitable for differential-interference -contrast-observation in the surface of un-transparent object and micro-observation in the transparent object. It equipped excellent UIS optical system and the notion of modularization function design, provide excellent optical performance and the update of the system. The product has the beautiful configuration, easy operation, clear image, so it is the perfect research instrument for detection and analytic of the precision engineering, etc.



Observe system:

The trinocular can easily change in the observation and photography Inclination of 30°, you do not need to down head or horizontal observation in the long time, it can make the neck and shoulder of operator feel comfortable, base on the 100% pass of light of Trinocular, the microscope adapt to low illumination of photography.



Transmitted illumination system:

With 6V 30W halogen lamp (brightness adjustable) can provide clear and bright image.

Collector for halogen lamp illumination and integrated field diaphragm.

Epi-illumination

Integrated field diaphragm, aperture diaphragm and (Y, B, G, ground glass) switching device. Push-pull analyzer and polarizer.

12V50W halogen lamp, brightness adjustable



DIC observation

Equip high quality DIC objectives and DIC observation system., in ord to show the clear ,profile distinct and 3D embossed image.



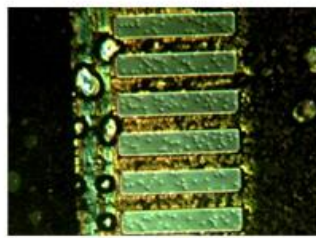
Photography Unit

By adding the appurtenance such as CCD adapter, digital camera adapter and single-reverse digital camera adapter and etc. It can achieve high clear observation mode of camera and vidicon

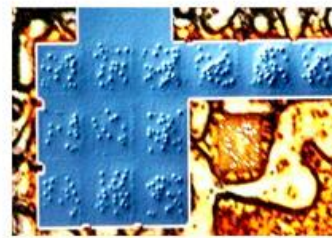
Digital camera photography:



DIC observe



DIC observe



DIC observe

Specification

• **Standard Configuration**

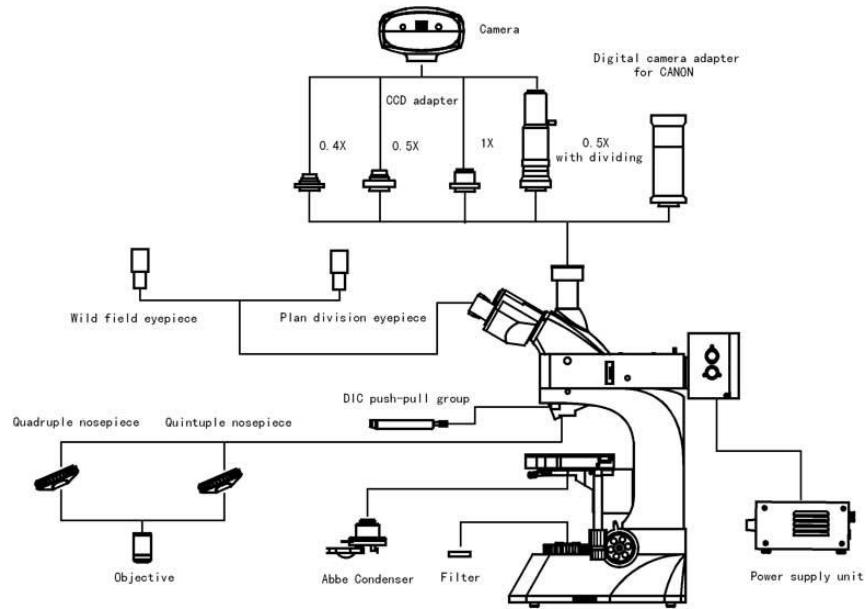
Model	L3230DIC
Eyepiece	Achromatic wide field SWF10X(Φ22mm)
Objective	Infinity plan achromatic objectives with long working distance (no cover glass)
	LMPlan5X/0.12 Work distance:18.2 mm
	LMPlan10X/0.25 Work distance:20.2 mm
	LMPlan20X/0.35 Work distance:6.0 mm
	PL L40X/0.60 (spring) Work distance:3.98 mm

DIC observation system	5X/10X/20X DIC push-pull group
Eyepieces tube	Trinocular, Inclination of 30°, Trinocular
Epi-illumination system	12V 50W, halogen lamp, adjustable brightness Integrated field diaphragm, aperture diaphragm and (Y,B,G, ground glass) switching device. Push-pull type analyzer and polarizer.
Focus system	Coaxial coarse/fine focus system, with tension adjustable and limit stopper, minimum division of fine focusing: 2 μ m.
Nosepiece	Quintuple (Backward ball bearing inner locating)
Stage	Double layer mechanical (Size:210mmX140mm,moving range:63mmX50mm)
Transmitted illumination system	Abbe condenser NA.1.25 Rack & pinion adjustable
	Blue filter and Ground glass
	Collector for halogen lamp illumination and integrated field diaphragm
	12V 30W halogen lamp, adjustable brightness

-
- **Optional accessories**

Name	Sort/Technique parameter	NO.
Eyepiece	Dividing eyepiece(field number: μ 18mm) 0.10mm/Div	1121010
Objective	Infinity plan achromatic objectives with long working distance (no cover glass)	
	PL L50X/0.70 (spring) Work distance:3.68mm	2260150
	PL L60X/0.70 (spring) Work distance:2.08mm	2260160
	PL L80X/0.80 (spring) Work distance:1.25 mm	2260180
	PL L100X/0.85 (spring and dry) Work distance:0.40mm	2260111
Nosepiece	Quintuple Backward ball bearing inner locating	032001
Filter	Green filter	115002
	Yellow filter	115003
CCD adapter	0.5X	810004
	1X	810002
	0.5X with dividing 0.1mm/Div	810003
Camera	DV-1 Video output & USB output	
	DV-130 / 300 / 500 / 900 with USB output	
	DV-3 With video output(380/520 TV line)	
Digital camera adapter	CANON(EF) NIKON(F)	820001

Diagram



Dimensions

